

# Coppermills

4 bedroom House

**Pembar Avenue, London, E17**

Offers in excess of £700,000 Freehold



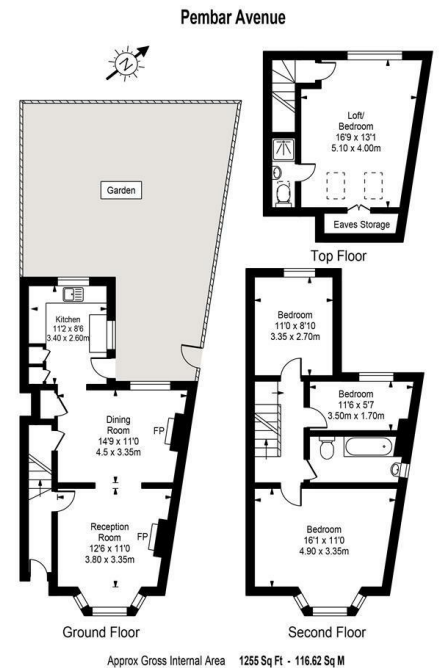
An end of terrace house located on a tree lined street. A spacious four bedrooms, two bathrooms house. Within easy reach of Blackhorse road station, schools and some great eateries. Walthamforest Council tax band C £1724

A mature garden. This property is ideally located for those who enjoy the Wetlands and the River Lee, there is an array of eateries

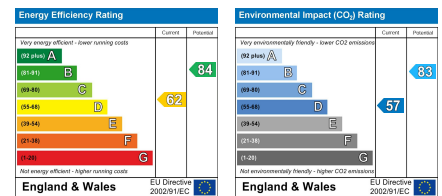
To view this property  
[info@coppermills.co.uk](mailto:info@coppermills.co.uk)  
020 8509 9170

A great home that's  
selling chain free!

# Pembar Avenue, London, E17



## EPC details



info@coppermills.co.uk  
 T: 020 8509 9170  
 M: 077 8217 0925  
 www.coppermills.co.uk  
 63 St James Street  
 London E17 7PJ

You may download, store and use the material for your own personal use and research. You may not republish, retransmit, redistribute or otherwise make the material available to any party or make the same available on any website, online service or bulletin board of your own or of any other party or make the same available in hard copy or in any other media without the owner's express prior written consent. The owner's copyright must remain on all reproductions of material taken.